



Technical Data - Installation

Email:- info@baitsafe.com.au Website:- www.baitsafe.com.au
Phone:- 0413 769 101 International Phone:- +61 413 769 101
MakeSafe™ Pty Ltd, PO Box 107 Glen Osmond, Adelaide, SA, 5064 Australia ABN 32 143 034 931

© Make Safe™ Pty Ltd, 2012

The Single Box Version

(Similar procedure for the 3 pack and 6 pack)



The Information on the Flaps that Fold into the Box

(They open out and are perforated for easy tear off)

Installing the bait

INSTALLING the BAIT

When installing in the wall cut the stem length down to suit the available wall depth. For exterior (or fibre cement) use the rubber seal.

73 mm ?
Short Mount for Wall

Normal Spike for Ceiling

Spike Socket
Bait Mounted on Spike

Firmly Push In
Twist & Pull to Release

Spike Socket must be tightly inserted into the base unit at all times.

Caution Bait Spike must be tightly inserted into the Spike Socket to prevent removal by rodents.

Any stray particles that may come from bait, while inserting, should be kept from children or pets.

Caution Before Cutting Hole
Check that there are no ceiling supports or services above your selected installation area.

90 mm

Caution - If installing in the Walls
Some baits include an attractant which may arouse curiosity in pets. Please check manufacturer's labelling.

Cutting template for ceiling or wall

Accessing the bait

ACCESSING the BAITSAFE™

Tighten the 'Key' onto the head of the paint pole. Check this before each use.

Paint Pole
'Key'

Insert 'key' prongs into the slots of the fascia plate, pushing up gently, against the surface.

Turn anti-clockwise to unlock. Lower the unit carefully from the ceiling.

After locking, lower the pole, and your bait station is ready for use

To replace the unit, insert the 'Key' into the fascia plate and raise it up to the ceiling. Gently insert and turn clockwise to lock.

INSTALL

1 Cut a 90 mm diameter hole

2

3

4

5

© Make Safe™ Pty Ltd, 2011
Do not over tighten screws
More information at ... www.baitsafe.com.au

Installing in the ceiling or wall

The parts in the Box



The bait 'Spike'

The 2 tabs reach out to clamp unit to ceiling or wall panels including foam filled

This gasket is used externally against dust or internally in areas such as food processing



A standard paint pole screws in here to allow a reach of up to 5 metres (17ft)

The ' Access Key' is required to service and replace the baits behind the station



The underside of the base unit is designed to catch 'spoils' from the bait and other contaminants. BaitSafe™ does not discriminate between baiting methods and can hold, bait blocks, paste or pellets in some cases even liquids.

Install

Caution

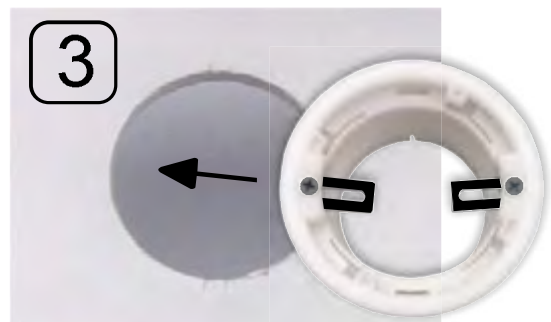
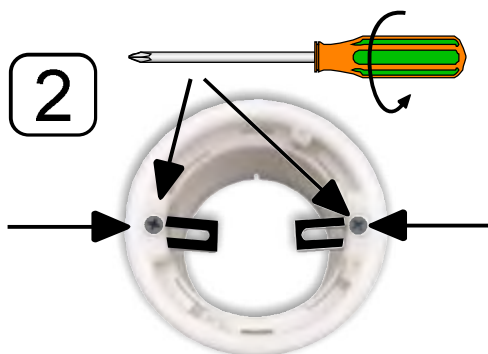
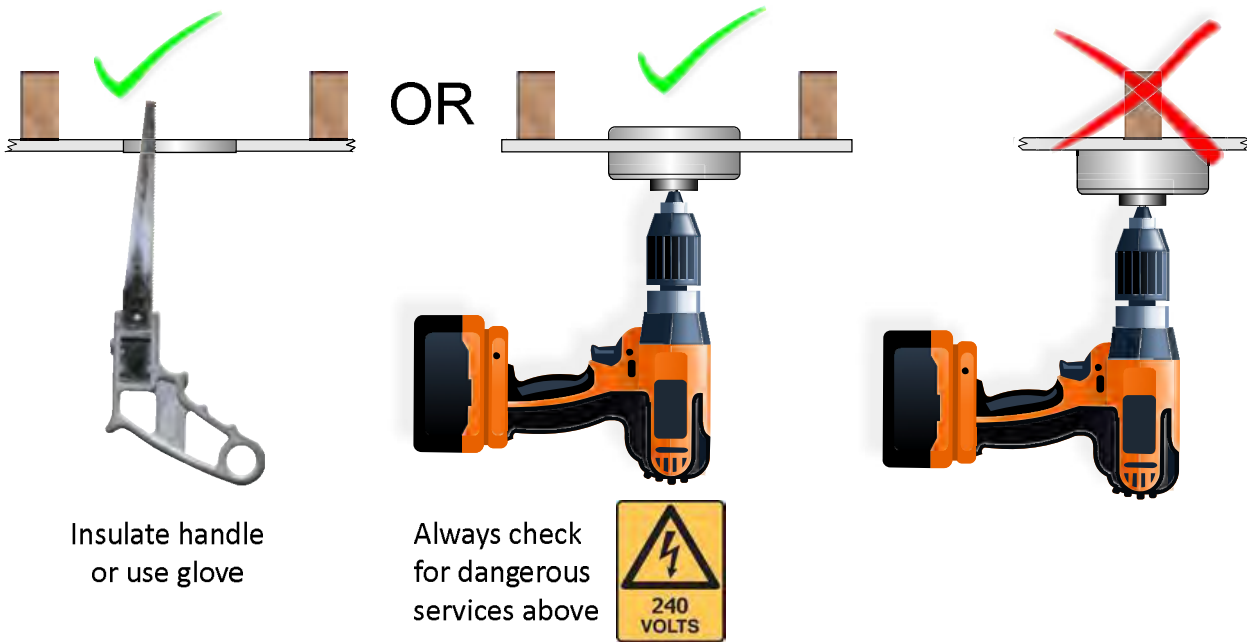
Before Cutting Hole

Check that there are no ceiling supports or services above your selected installation area.

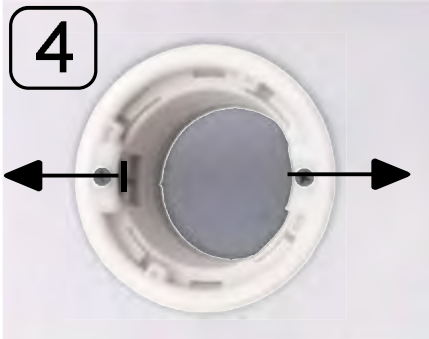
Caution - If installing in the Walls

Some baits include an attractant which may arouse curiosity in pets. Please check manufacturer's labelling.

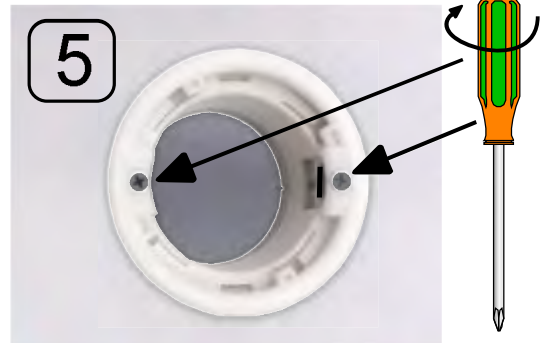
1 Cut a 90 mm diameter hole



Install ..continued

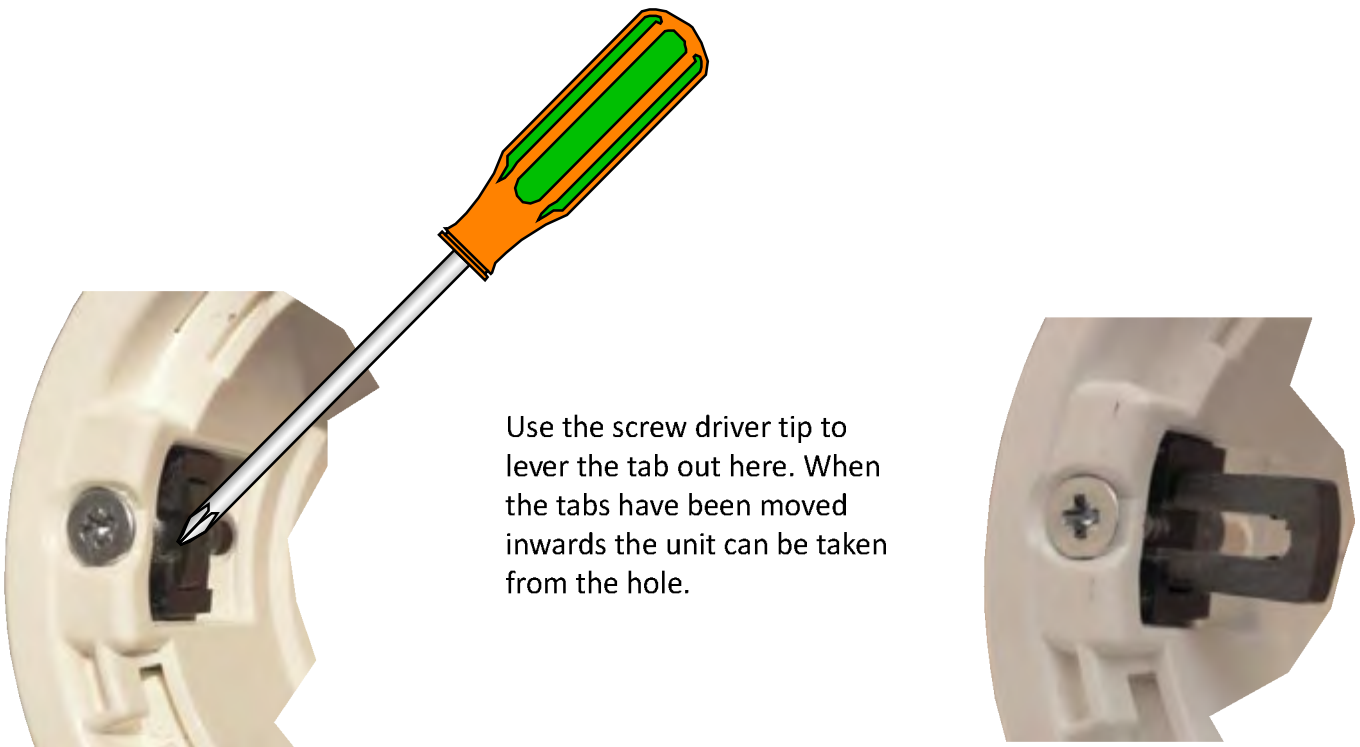


Push the tabs outwards



Do not over tighten screws

Should you wish to Remove BaitSafe™



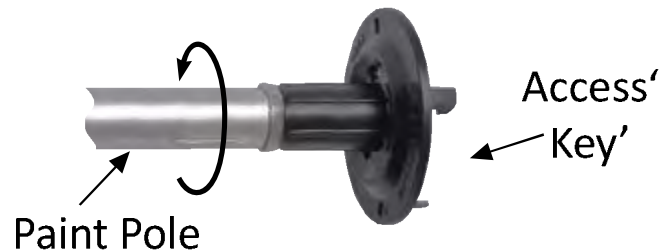
Use the screw driver tip to lever the tab out here. When the tabs have been moved inwards the unit can be taken from the hole.

More information at ...www.baitsafe.com.au

© MakeSafe™ Pty Ltd, 2012

Accessing the BaitSafe™

Tighten the 'Key' onto the head of the paint pole.
Check the key is tight before each use.



Insert 'Key' prongs into the slots of the fascia plate, pushing up gently, against the surface.

Turn anti-clockwise to unlock.
Lower the unit carefully from the ceiling.

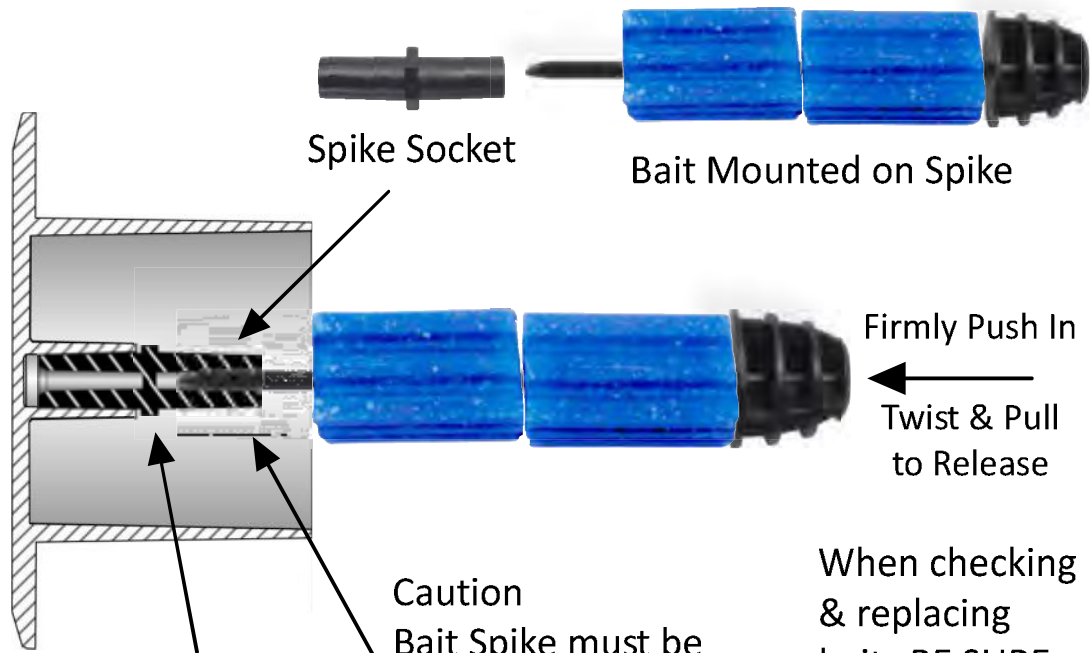
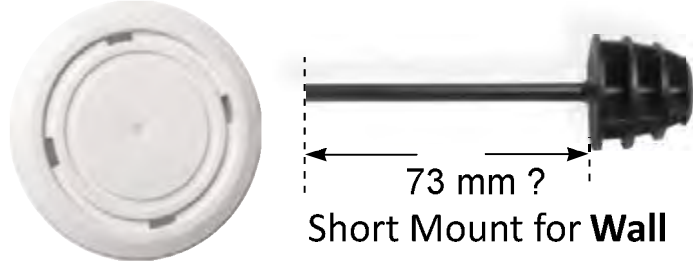


To replace the unit, insert the 'Key' into the fascia plate and raise it up to the ceiling. Gently insert and **turn clockwise to lock.**

After locking, lower the pole, and your bait station is ready for use.

Installing the Bait

When installing in the wall cut the stem length down to suit the available wall depth. For exterior (or fibre cement) use the rubber seal.



Spike Socket must be **tightly** inserted into the base unit at all times.

Caution
Bait Spike must be **tightly** inserted into the Spike Socket to prevent removal by rodents.

When checking & replacing baits BE SURE the Spike is secured **tightly** onto the socket.

Any stray particles that may come from bait, while inserting, should be kept from children or pets.